



## INSTALLATION MANUAL

**Vehicle:** 2015+ Chevy Colorado, 2WD and 4WD Chase Kit

**Part #** CC0U15

**Level 1 Install:** Bolt on

**Install Time:** 2 hours (approximate)

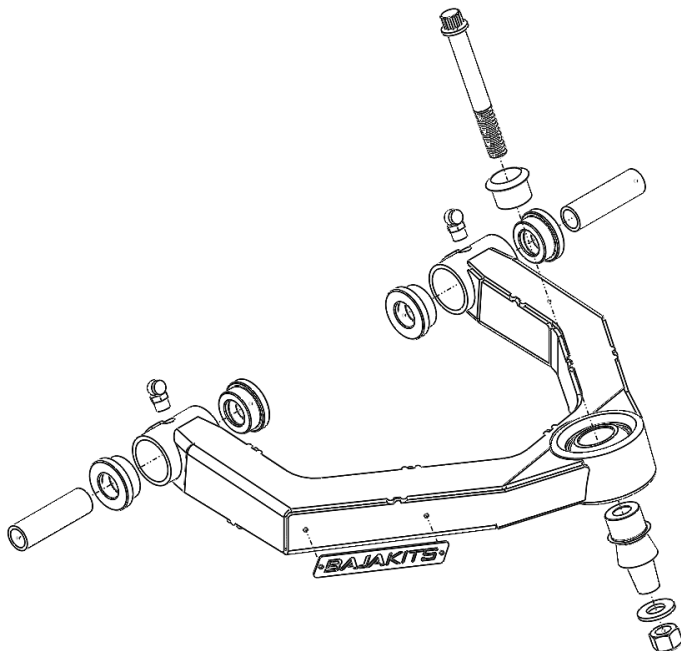
**\*\*NOTE:** Read through entire installation manual before deciding whether to attempt the procedure. Do not attempt if you do not possess the proper know-how and tools necessary to complete the installation.

# Chase Kit

**Vehicle:** 2015+ Chevrolet Colorado, 2WD and 4WD

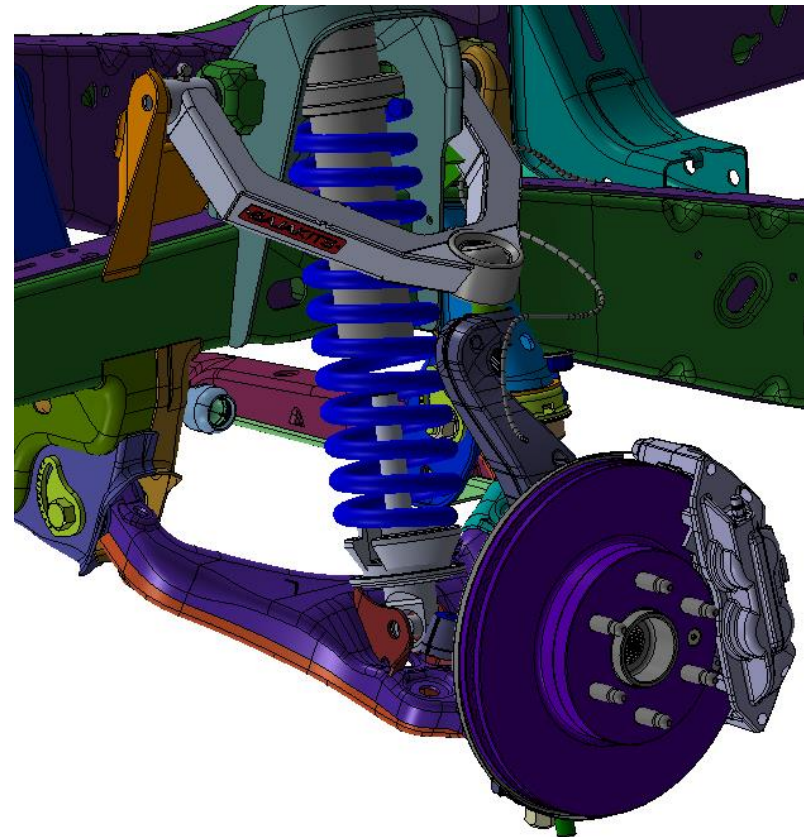
## Parts List:

- LH & RH Upper Control Arm (UCA)
  - Uniball (installed)
  - Delrin Bushings (installed)
  - Crush sleeves (installed)
  - Baja Kits badges (installed)
  - Zerk fittings (installed)
  - Misalignment spacers (installed)
- Aftermarket Shocks with hardware (optional)



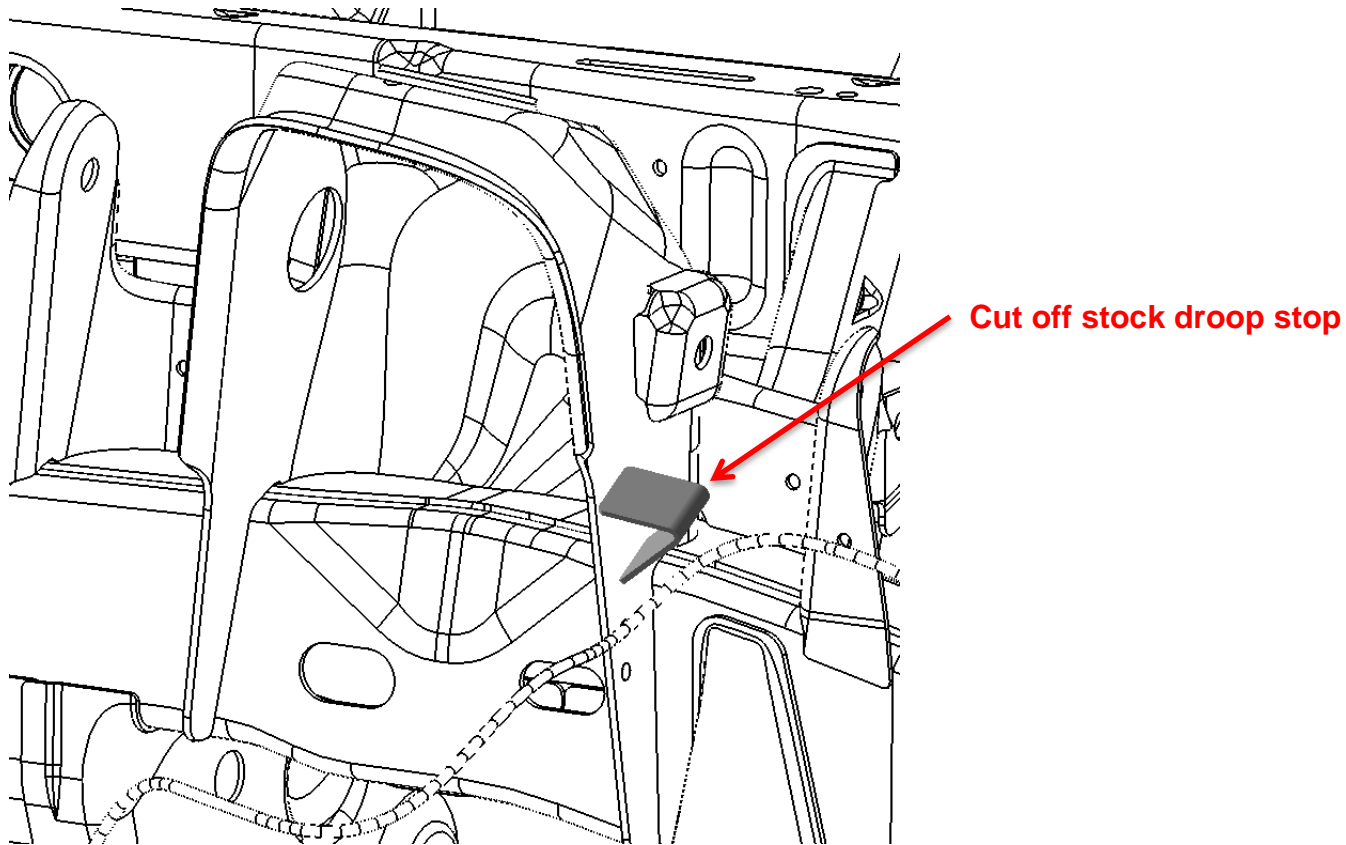
## Tool List:

- SAE Socket/wrench set
- Metric Socket/wrench set
- Torque wrench
- 1/2" - 12 point socket
- Grease gun



## Chase Kit

1. Start by lifting the front end of the vehicle and placing wheel chocks behind both rear wheels.
2. Remove the shocks to access UCA bolts (sway bar may need to be removed to make removal of shocks easier)
3. Remove the UCAs on both sides (from the spindle first, then the frame)
4. Cut off stock droop stop in order to gain the maximum amount of suspension travel (see photo below)



## Chase Kit

5. Install Baja Kits upper control arm using supplied hardware
  - Reuse the stock upper control arm bolt
  - Torque UCA pivot bolt to manufacturer specifications
  - Torque the 12 point bolt on the spindle to 100 ft-lbs
6. Grease the inner pivots on the UCA
7. Install shock assembly
8. Reconnect brake line to UCA, place at downward angle to clear UCA at droop, small locating tab must be removed



## Chase Kit

9. The plastic fender trim pieces may need to be modified for full use of the suspension (see pictures below)
- The suspension should be cycled with wheel and tire in order to ensure clearance is correct



## Chase Kit

10. Have alignment checked after installation
11. Check and re-torque bolts after the first 500 miles
12. Follow BajaKits "General Maintenance Manual" for the life of the kit to ensure longevity of the components



FOR ANY TECHNICAL QUESTIONS OR  
SUPPORT, PLEASE CONTACT BAJA KITS AT  
949-566-8615

Rev	Description	Date	Initial
-	Initial Release	5/30/2017	JOS