



INSTALLATION MANUAL

Vehicle: 2019+ Chevy Silverado/Sierra 1500, 2WD & 4WD Prerunner Kit

Part # C10P19

Level 2 Install: Bolt on w/drilling and/or minimal grinding

Install Time: 8 hours (approximate)

****NOTE:** Read through entire installation manual before deciding whether to attempt the procedure. Do not attempt if you do not possess the proper know-how and tools necessary to complete the installation.

Prerunner Kit

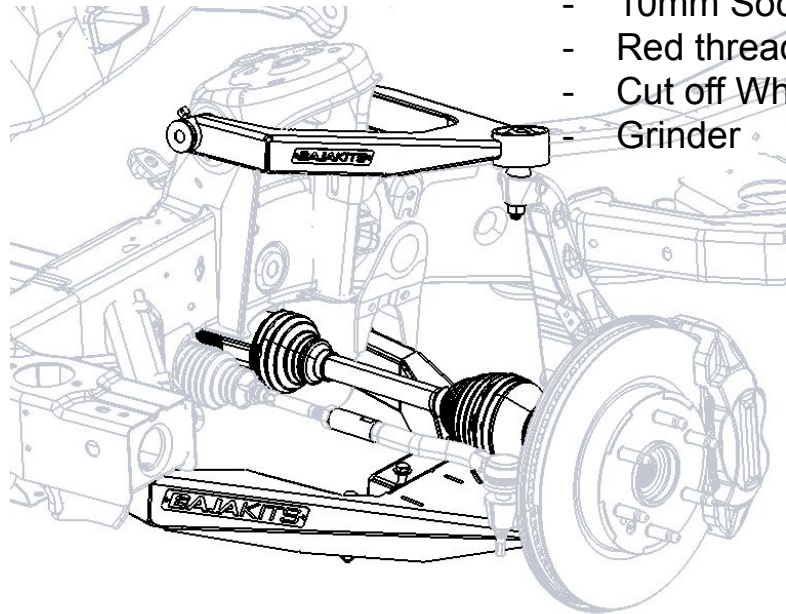
Vehicle: 2019+ Chevrolet Silverado/Sierra 1500, 2WD & 4WD

Parts List:

- LH & RH Upper Control Arm (UCA)
 - Uniball (installed)
 - Custom High Density Bushings (installed)
 - Crush sleeves (installed)
 - Baja Kits badges (installed)
 - Zerk fittings (installed)
 - Misalignment spacers (installed)
- LH & RH Lower Control Arm (LCA)
 - Uniball (installed)
 - Custom High Density Bushings (installed)
 - Crush sleeves (installed)
 - Baja Kits badges (installed)
 - Zerk fittings (installed)
 - Misalignment spacers (installed)
- Steering extensions
- Extended length axle (4WD only)

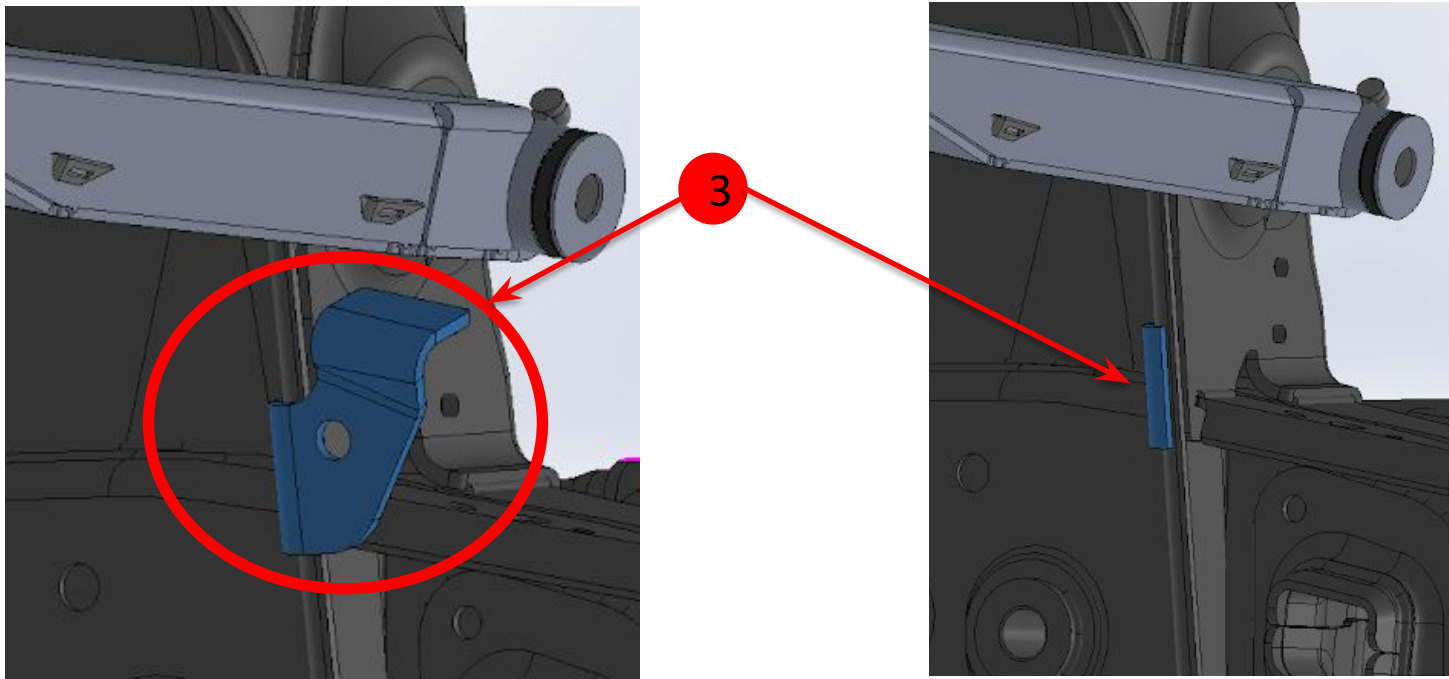
Tool List:

- 1-1/16" Socket/wrench
- 13/16" Socket/wrench
- 15/16" Socket/wrench
- 7/8" Socket/wrench
- 3/4" Socket/wrench
- 5/8" Wrench
- 9/16" Socket/wrench
- 1/2" – 12 point socket
- 9/16" – 12 point socket
- 21mm Socket/wrench
- 10mm Socket/wrench
- Red threadlocker
- Cut off Wheel
- Grinder



Prerunner Kit

1. Install fiberglass fenders for maximum wheel travel (Using a stock fender is an option for mild use)
 - ****ATTENTION**** You may run 37" tires with stock fenders for mild use **ONLY**. 37" tires will clear under normal driving conditions and **WILL** contact your stock fender at full compression (AKA jumping the truck, hitting bumps or driveways at speed) The owner accepts the risk of damaging the stock fenders in this scenario.
2. Remove stock suspension: Knuckle, UCA, LCA, Axle Assembly, Shock, Sway bar, and Tie Rod **END** only
 - Stock sway bar can only be reused with Baja Kits Sway Bar Links (sold separately).
3. Cut off factory droop stop for maximum wheel travel (see illustrations below)

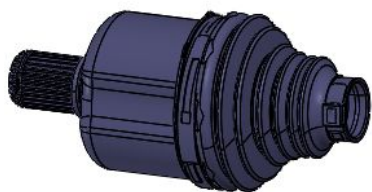


AXLES (4WD ONLY)

This vehicle has several different front axle configurations. Depending on your VIN# you will receive what is needed for the axles of your vehicle. **PLEASE MAKE SURE THAT YOU PROVIDE YOUR VIN# TO BAJA KITS TO ENSURE PROPER FITMENT.**

4. Assemble axle with supplied Baja Kits parts

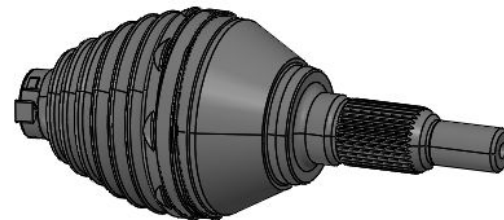
****REFER TO BAJA KITS AXLE REBUILD MANUAL FOR REBUILD PROCEDURE****



Inner CV



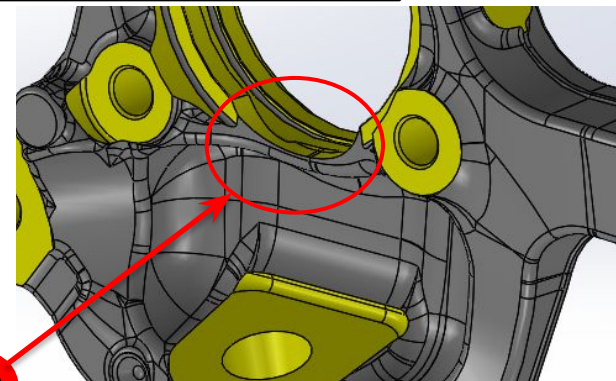
Baja Kits Extended Axle Shaft



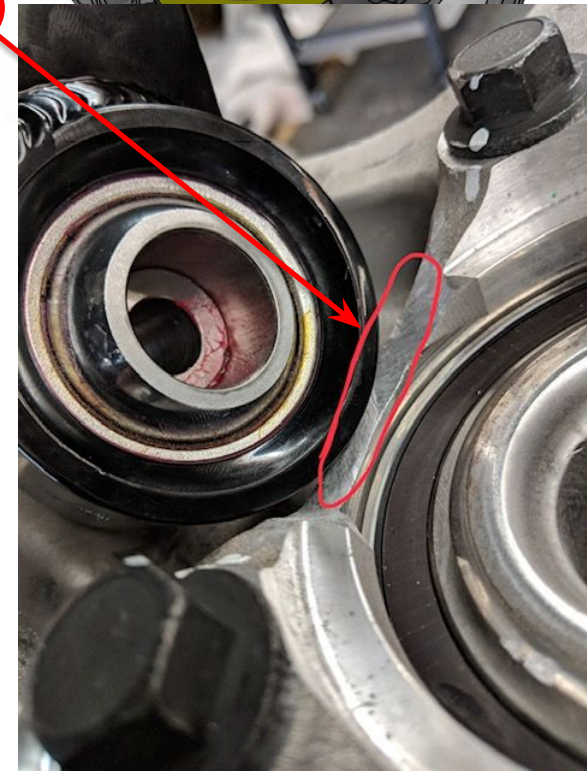
Outer CV

Prerunner Kit

5. Install Baja Kits LCA to the frame using the factory hardware.
 - Torque to factory specs
 - Use red threadlocker
6. Install Baja Kits extended axle assembly (**4WD only**)
 - Line up the splines on the inboard side and push the axle into the differential.
7. Install Baja Kits UCA to the frame using the factory hardware.
8. Clearance the knuckle to clear LCA uniball cup (see illustrations)
9. Install Knuckle
 - Hand tighten CNC Machined LCA Taper adapters to uniball
 - Bolt Knuckle to the LCA using supplied hardware and red Loctite. Torque to factory specs.
 - Insert axle end through hub and thread axle nut on
 - Check clearance of CV boot clamp and LCA, use low profile clamps
 - Hand tighten CNC Machined UCA Taper adapters to uniball
 - Bolt Knuckle to the UCA using supplied hardware, may require floor jack to lift into place
 - Torque hub nut to factory Specs

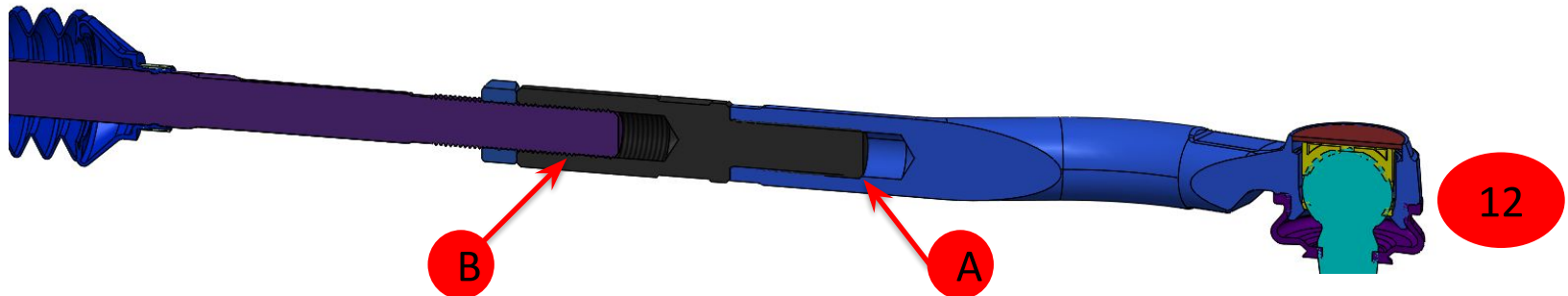
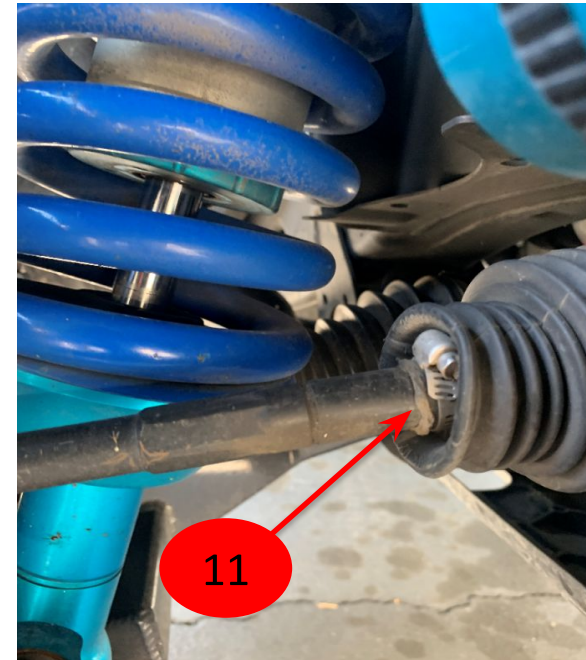


8



Prerunner Kit

10. Bolt shocks onto frame and Baja Kits LCA
11. Steering boot
 - Release steering boot outer clip and slide boot up towards steering rack.
 - Secure it out of the way from shock using black RTV and a hose clamp.
12. Steering extension
 - A) Apply red loctite to male thread of steering extension and make sure to thread entirely into outer tie rod.
 - B) Install steering extension onto inner tie rod. Adjustment to alignment is only to be done between inner tie rod end and steering extension.
 - C) Bolt to knuckle
13. If purchased, reattach stock sway bar to LCA with Baja Kits Sway Bar Links (sold separately)
14. Have alignment checked after install is complete



Prerunner Kit

14. Check and torque bolts after the first 500 miles
15. Make sure to follow the maintenance procedures outlined in the Baja Kits “General Maintenance Manual” for the life of the truck
 - This will ensure that the kit is able to perform at its top level



FOR ANY TECHNICAL QUESTIONS OR
SUPPORT, PLEASE CONTACT BAJA KITS AT
949-566-8615

Rev	Description	Date	Initial
-	Initial Release	12/27/2019	GG

