



## INSTALLATION MANUAL

**Vehicle Application:**  
2021-2025 Ford Bronco - Pre Runner - UCA

**Kit Part #:**  
BJK3321001  
BJK3321002

Level 2 Install: Bolt on with drilling &/or minimal grinding  
Install Time: 8 hours (approximate)

**\*\*NOTE:** Read through entire installation manual before deciding whether to attempt the procedure. Do not attempt if you do not possess the proper know-how and tools necessary to complete the installation.



## BEFORE YOU START

Baja Kits recommends this system be installed by a professional technician. In addition to these instructions, professional knowledge of disassembly/reassembly procedures and post installation checks must be known.

## FOR YOUR SAFETY

Certain Baja Kits products are intended to improve off-road performance. Modifying your vehicle for off-road use may result in the vehicle handling differently than a factory equipped vehicle. Extreme care must be used to prevent loss of control or vehicle rollover. Failure to drive your modified vehicle safely may result in serious injury or death. Baja Kits does not recommend the combined use of suspension lifts, body lifts, or other lifting devices. You should never operate your modified vehicle under the influence of alcohol or drugs. Always drive your modified vehicle at reduced speeds to ensure your ability to control your vehicle under all driving conditions. Always wear your seat belt.

## BEFORE INSTALLATION

- Special literature required: OE Service Manual for model/year of vehicle. Refer to manual for proper disassembly/reassembly procedures of OE and related components.
- Secure and properly block vehicle prior to installation of Baja Kits components. Always wear safety glasses when using power tools.
- Due to payload options and initial ride height variances, the amount of lift is a base figure. Final ride height dimensions may vary in accordance to original vehicle attitude. Always measure the attitude prior to beginning installation.

## BEFORE YOU DRIVE

Check all fasteners for proper torque. Check to ensure for adequate clearance between all rotating, mobile, fixed, and heated members. Verify clearance between exhaust and brake lines, fuel lines, fuel tank, floor boards and wiring harness. Check steering gear for clearance. Test and inspect brake system.

Perform steering sweep to ensure front brake hoses have adequate slack and do not contact any rotating, mobile or heated members. Inspect rear brake hoses at full extension for adequate slack. Failure to perform hose check/ replacement may result in component failure. Longer replacement hoses, if needed can be purchased from a local parts supplier.

Perform head light check and adjustment.

Re-torque all fasteners after 500 miles. Always inspect fasteners and components during routine servicing.

**FOR ANY TECHNICAL QUESTIONS OR SUPPORT,  
PLEASE CONTACT BAJA KITS**

**949.566.8615**

**tech-baja@ridefox.com**



## BJK3321001/2 - Bronco Pre-Runner Kit

Item	Qty	BJK3321001 & BJK3321002
A5043	1	Baja Kits: Ford Bronco - Pre Runner - UCA -DS
A5044	1	Baja Kits: Ford Bronco - Pre Runner - UCA -PS
911-0001	2	Steering Extender (BJK3321001)
911-0005	2	Steering Extender (BJK3321002)
B5107	1	Baja Kits: Brake Line Extension - Bag Kit
	4	3/8" Brake Line Crush Washer
	2	Brake Line: 24" Brake Line Extension
	2	Brake Fitting: 10mm x 1.5 Brake Line Fitting
	2	Brake Fitting: 10mm 45 Degree Banjo
	6	11.5" Nylon Cable Tie - Black
B5047	2	Baja Kits: Billet UCA Misalign -Bag Kit
	2	1/2" Nylock Nut Clear
	2	Hardware: Billet UCA Uniball Cap
	2	Misalignment: Sunk Misalignment 1/2" - SS
	2	Misalignment: UCA Taper
	8	Hardware: Bolt: 10-32 x 3/8" Hex Screw
	2	Hardware: Bolt: 1/2" x 4 - 12 Point
	2	Hardware: O-Ring: 1/16" Width
	2	1/2in Washer
B5048	2	Baja Kits: UCA Hardware Kit - Bag Kit
	2	Wire Clip
	8	Hardware: Bolt: 1/4" x 1" Socket Head Screw
	4	Bushing: .75" x .162" Stepped Boss
	4	Bushing: .75" x 1.688" Stepped Boss
	4	Hardware: 3/4" Jam Nut
	2	Hardware: 1/4" x .5 SS Hex Screw
	4	Hardware: 3/4" Rod End

Item	Qty	BJK3322001
A5045	1	Baja Kits: Ford Bronco - Pre Runner - LCA - DS
A5046	1	Baja Kits: Ford Bronco - Pre Runner - LCA - PS
B5049	2	Baja Kits: LCA Delrin Bushing Bag Kit
	8	Bushing: Delrin Bushing .6"
	4	Sleeve: LCA Front Crush Sleeve
B5050	2	Baja Kits: LCA Misalign Bag Kit
	2	1/2" Nylock Nut Clear
	2	Misalignment: Sunk Misalignment 1/2" - SS
	2	Misalignment: Ford Bronco - LCA Taper
	2	Hardware: Bolt: 1/2" x 4" - 12 Point
	2	1/2" Washer
924-1011	1	Bolt Pack:LCA CO Mounting
	4	12mm-1.75 x 95mm Hex Head

Item	Qty	BJK3322001 Continued
	4	12mm-1.750 Nylon Instert Lock Nut
	8	12mm Washer, Clear Zinc
B5060	2	Baja Kits: 7" Badge Rivet Bag Kit
	4	Hardware: 90 Deg Zerk Fitting 1/8 NPT
	2	Badge: Baja Kits Logo, 7" Rivet
	4	1/8in 18-8 Stainless Steel Band Rivet
B5118	1	Baja Kits: LCA Hardware Bag Kit - FOX Shocks
	4	Hardware: Washer: M12 Steel Washer
	4	Hardware: Bolt: M12 1.75 x 80mm

Item	Qty	BJK3326001
910-0013	2	Axle: Pre Runner -Axle
86-5832	4	Universal CV Clamp - 14.5in Long
6865833	4	Constant Velocity (CV) Joint Boot Clamp

Item	Qty	BJK3308003
A5059	2	Baja Kits: Sway Bar Link
B5103	2	Baja Kits: Sway Bar Links - Hardware Bag Kit
	2	Misalignment: .625 x M12 x .7 - Tie Rod Misalign
	6	Misalignment: .625 x M12 x .335 - Tie Rod Misalign
924-1001	2	Bolt Pack: Sway Bar Links - Hardware Kit
	2	12mm-1.75 Flange Nylock Nut
	1	12mm-1.75 x 65mm Flange Hex Head Bolt
	1	12mm-1.75 x 80mm Flange Hex Head Bolt
	1	9/16"-12 x 1-3/4" Head Hex Bolt
	1	9/16"-12 Flange Head Nylock Nut
	1	14mm Washer
922-0007	2	Bracket: Sway Bar Link Clevis



**REQUIRED TOOLS**

- Basic hand tools
- Torque Wrench
- Air Hammer
- Manufacturer Torque Specifications

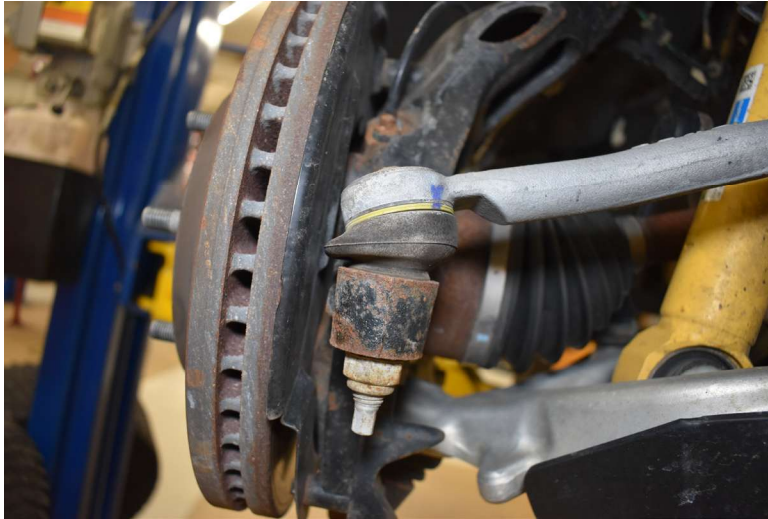
**Important Notes**

HOSS 3.0 Front Fox Coilovers will NOT work

## BJK3321001/2 - Bronco Pre-Runner Kit

### DISASSEMBLY

1. Park vehicle on clean, flat, and level surface.
2. Block the rear wheels for safety.
3. Raise the front of the vehicle. Support the frame rails with jackstands.
4. Remove the front wheels.
5. Disconnect tierod end. Use 21mm socket. **Fig. 1, 2**

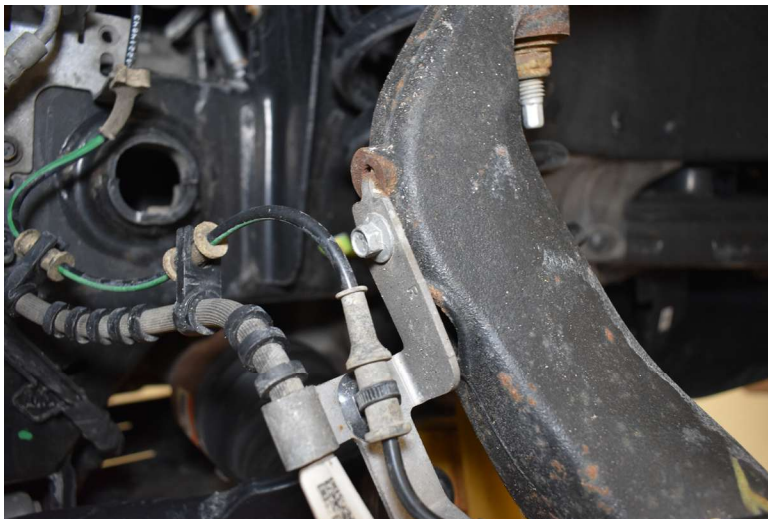


**FIGURE 1**



**FIGURE 2**

6. Disconnect ABS / brake line brackets from knuckle and frame. USE 10mm socket. **Fig. 3, 4**



**FIGURE 3**



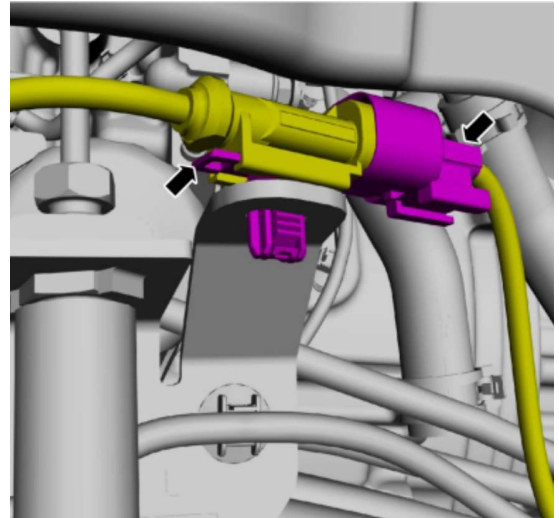
**FIGURE 4**

7. Disconnect ABS sensor from knuckle. Do not damage sensor. USE 8mm socket. **Fig. 5A**

**Note:** If it is not possible to remove the sensor easily, do not force it as this could damage the sensor. If the sensor will not come out of the knuckle you can unplug the ABS line up near the frame bracket. **Fig. 5B**



**FIGURE 5A**



**FIGURE 5B**

8. Remove CV nut. USE 36mm Socket. **Fig. 6**



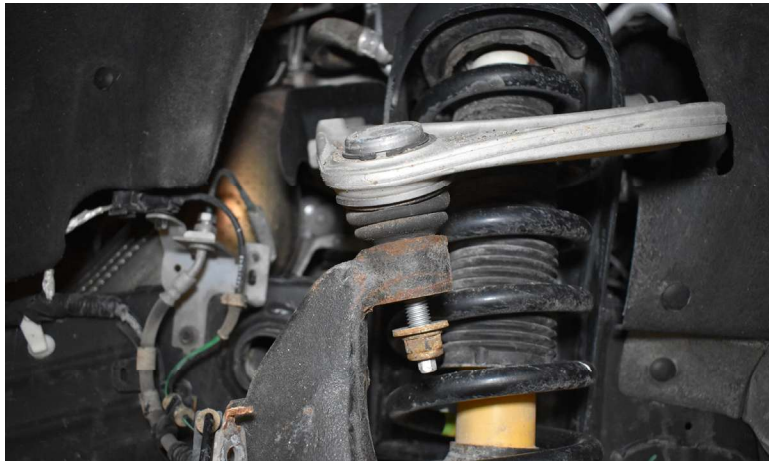
**FIGURE 6**

## BJK3321001/2 - Bronco Pre-Runner Kit

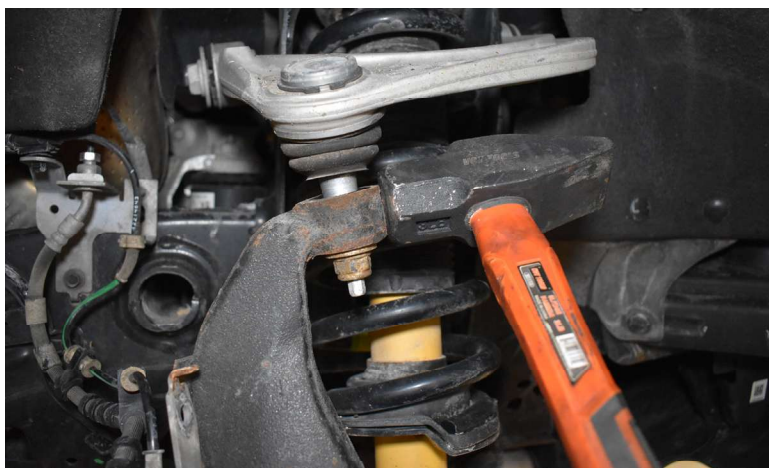
9. Disconnect UCA from Knuckle. Tap knuckle with hammer to separate or use appropriate ball joint tool to separate UCA from knuckle. **Fig. 7, 8, 9**



**FIGURE 7**



**FIGURE 8**

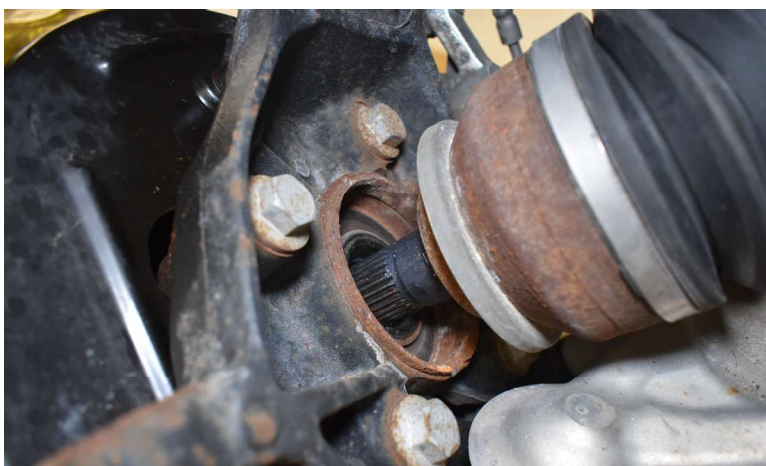


**FIGURE 9**

10. Using an air hammer, push CV axle out of the wheel bearing. **Fig. 10, 11**



**FIGURE 10**

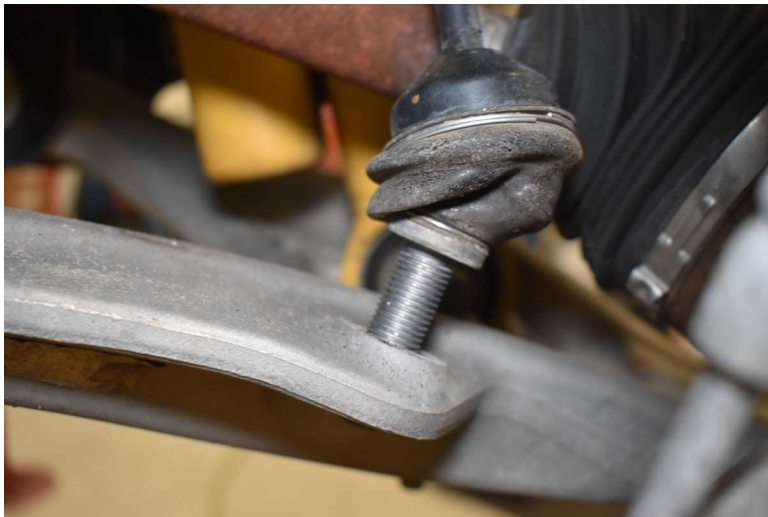


**FIGURE 11**

## BJK3321001/2 - Bronco Pre-Runner Kit

11. Remove the 2 bottom strut nuts

12. Disconnect sway bar link. **Fig. 12, 13** - USE 21mm socket.



**FIGURE 12**



**FIGURE 13**

13. Disconnect the lower strut from the lower control arm and use a pry bar to remove lower strut from LCA. **Fig. 14**



**FIGURE 14**

14. Remove the 3 top strut nuts. USE 15mm socket. DO NOT REMOVE THE CENTER NUT. **Fig. 15**



**FIGURE 15**

15. Remove strut. **Fig. 16**



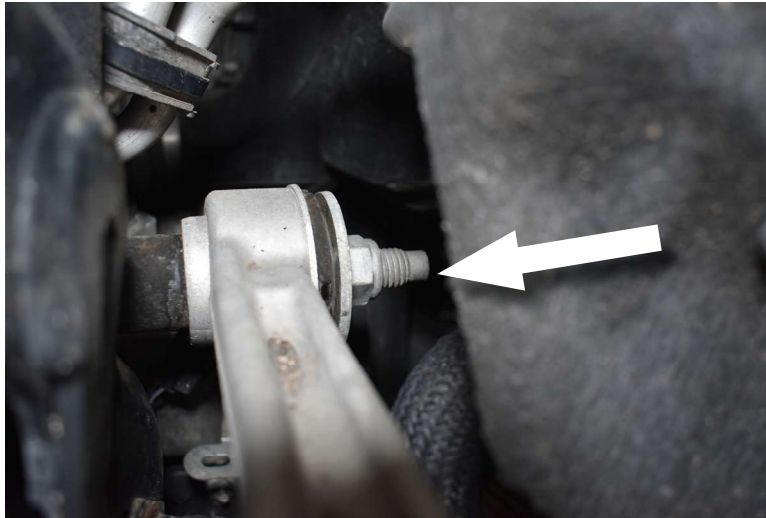
**FIGURE 16**

16. Remove OE CV axles by tapping with hammer and prybar.

17. Loosen UCA nut/bolt. Remove your UCA bolt and remove your UCA. Get pic of bolt coming out. Retain OE Hardware. **Fig. 17, 18**

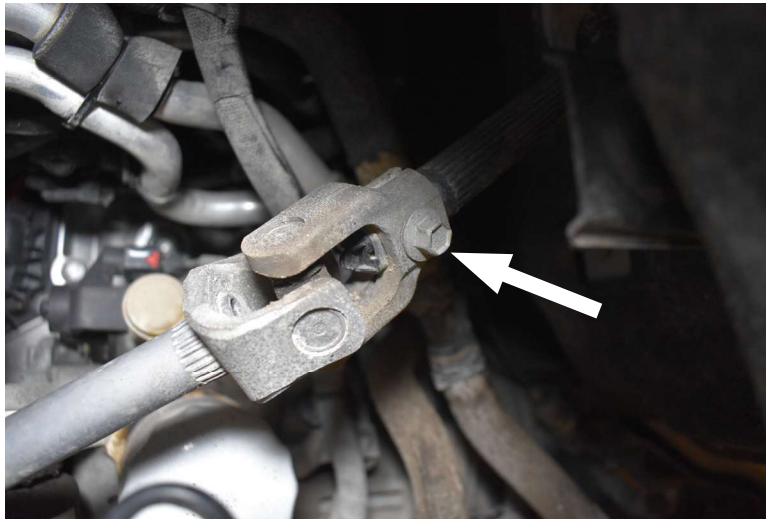


**FIGURE 17**



**FIGURE 18**

**NOTE:** When removing the upper control arm bolt on the driver side the steering linkage will need to be disconnected for proper clearance. Make sure when removing the bolt the steering wheel does not rotate and the joint is connected together at the same position. Damage to the clock spring may result. **Fig. 19**



**FIGURE 19**

**ASSEMBLE UCA**

18. Install jam nut and anti seize threads. **Fig. 20A, 20B**

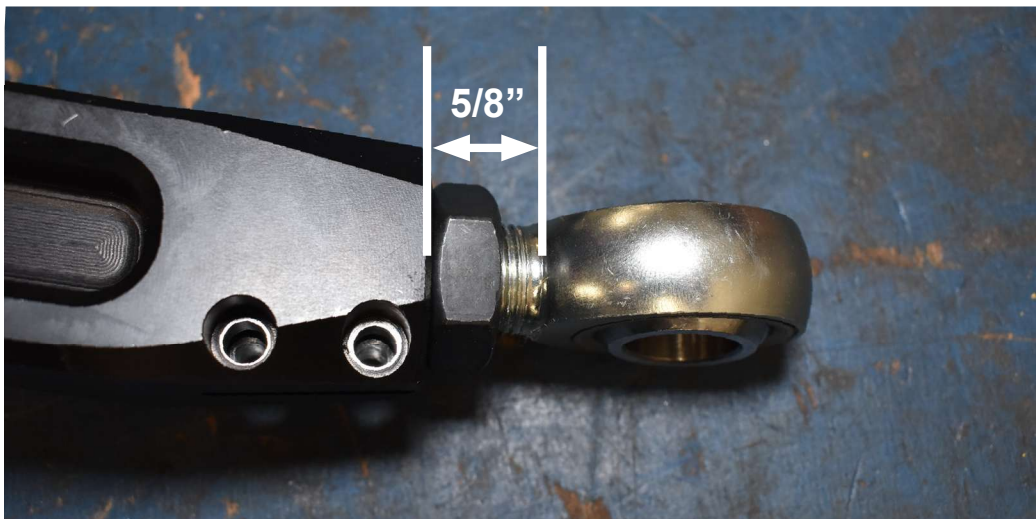


**FIGURE 20A**



**FIGURE 20B**

19. Install heims to 5/8" thread from arm to base of eye.. **Fig. 21**



**FIGURE 21**

20. Install misalignments making sure the wide misalign goes on the inside. **Fig. 22**



**FIGURE 22**

21. Use OE UCA bolt to prevent heims from spinning. Tighten jam nuts using 1-1/8" wrench. **Fig. 23**



**FIGURE 23**

22. Loctite and install pinch bolts. **Fig.24**



**FIGURE 24**

### **UCA INSTALLATION**

23. BOTH SIDES: Install the Baja Kit upper control arms using the OE bolt/nut/washers. DO not tighten. Fig. 25A, 25B



**FIGURE 25A**



**FIGURE 25B**

## LCA DISSASSEMBLY

24. Disconnect and remove brake calipers, use caliper hanger to prevent line damage. **Fig. 26**



**FIGURE 26**

25. Remove brake rotor.

26. Remove LCA ball joint nut USE 21mm socket. **Fig. 27**



**FIGURE 27**

27. Strike joint with hammer to dislodge taper.

28. Remove knuckle from LCA. **Fig. 28**



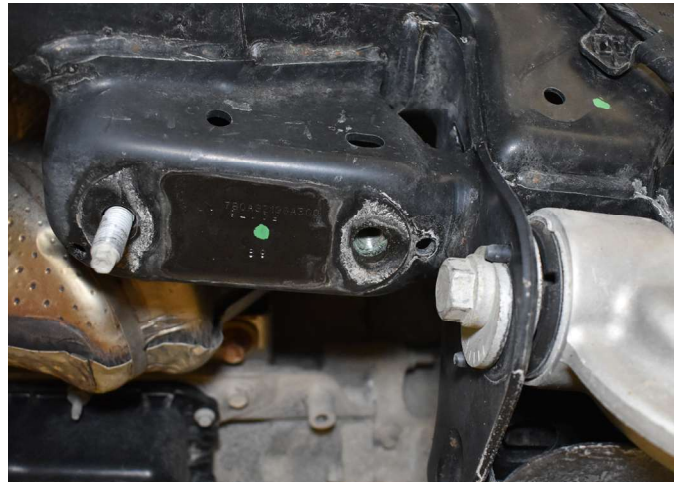
**FIGURE 28**

29. Using a pry bar, break CV axle loose from transmission and remove from vehicle. Set aside for axle swap later in instruction steps.

30. Remove sway bar bracket. USE 18mm socket. Removal of the sway bar allows for the removal of the rear LCA bolt. **Fig. 29A, 29B**



**FIGURE 29A**



**FIGURE 29B**

31. Loosen LCA bolts and remove nut and let swing down. Remove LCA's

### **LCA ASSEMBLY**

32. Grease and install bushings. **Fig. 30**



**FIGURE 30**

33. Grease and install Sleeves into the bushings. **Fig. 31**



**FIGURE 31**

34. Install grease zerks. **Fig. 32**

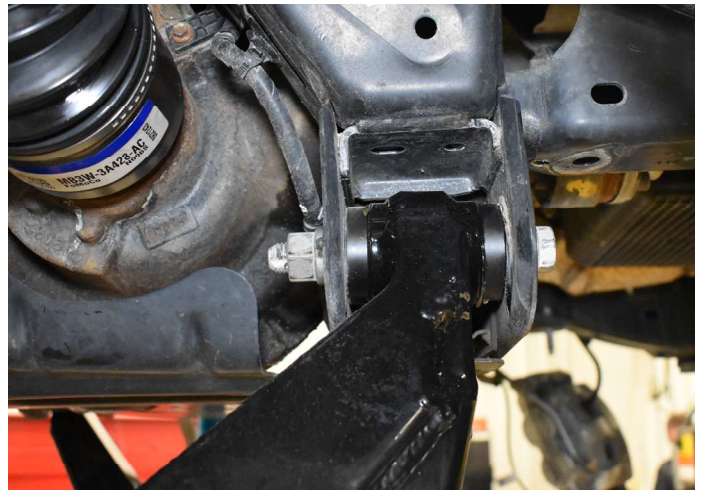


**FIGURE 32**

35. Install LCA into the frame brackets using the factory hardware. **Fig. 33A, 33B**



**FIGURE 33A**



**FIGURE 33B**

36. Install bearing misalign and 12pt - 13mm bolt - **Fig. 34**



**FIGURE 34**

37. Install knuckle to the LCA using the provided nut and washer. USE 19mm socket. Torque to spec.  
**Fig. 35A, 35B**



**FIGURE 35A**



**FIGURE 35B**

**USE INSTRUCTIONS PROVIDED WITH COILOVERS TO INSTALL COILOVERS AT THIS TIME.**

**REFERENCE BJK3326001 INSTRUCTIONS FOR CV SHAFT DISASSEMBLY / RE-ASSEMBLY**

38. Install CV axles by aligning splines and tapping in with a soft hammer and support with straps. DO NOT DAMAGE AXLE THREADS. **Fig. 36**



**FIGURE 36**

39. Swing up knuckle and insert axle into wheel bearing carefully until splines align. **Fig. 37**



**FIGURE 37**

40. Connect UCA to knuckle using the provided hardware. USE 12pt - 13mm socket and 19mm socket on the nut. Tighten to spec.

41. Install the sunk misalign into the uniball. **Fig. 38**



**FIGURE 38**

42. Install the 13mm - 12point bolt. **Fig. 39**



**FIGURE 39**

## BJK3321001/2 - Bronco Pre-Runner Kit

43. Install the taper misalignment into the knuckle. Align and attach the UCA to the knuckle using the provided nylock nut and washer. USE 19mm socket. **Fig. 40**



**FIGURE 40**

**NOTE:** When attaching UCA to knuckle be sure to slide CV back into the wheel bearing. **Fig. 41**



**FIGURE 41**

44. BOTH SIDES. Tighten UCA bolt and nut. USE 24mm for bolt and 21mm for nut. Torque to spec.

45. DRIVER SIDE - reattach the steering shaft. **IMPORTANT:** Loctite bolt and torque to OE spec.  
Fig. 42A, 42B



FIGURE 42A



FIGURE 42B

46. Replace and axle nut. Torque to spec. USE 36mm Socket

### SWAY BAR LINKS INSTALLATION

47. Install bajakit sway bar link bracket to the LCA. Fig. 43

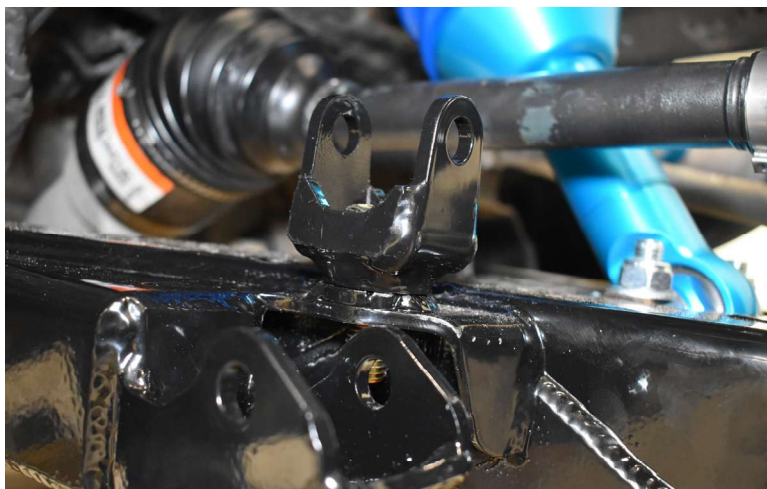
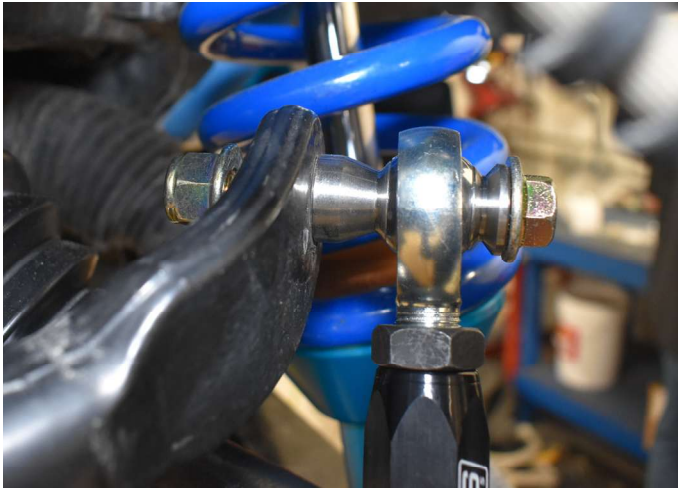


FIGURE 43

48. Set sway bar link to 7" eye to eye. Install sway bar link using the offset misalignment between the link and the sway bar. Install at the LCA using the 2 taper misaligns. **Fig. 44A, 44B**



**FIGURE 44A**



**FIGURE 45B**

49. Reinstall brake rotors.

50. Reinstall Brake calipers.

51. Re-Attach CV axle nut. **Fig. 45**



**FIGURE 45**

52. Loosen the tie rod jam nut and remove the tie rod end. **Fig. 46A** Loctite and thread the tie rod extension into the tie rod end. **Fig. 46B**



**FIGURE 46A**



**FIGURE 46B**

53. Install tie rod end to the tierod and re-attached to knuckle. **Fig. 47A,47B**



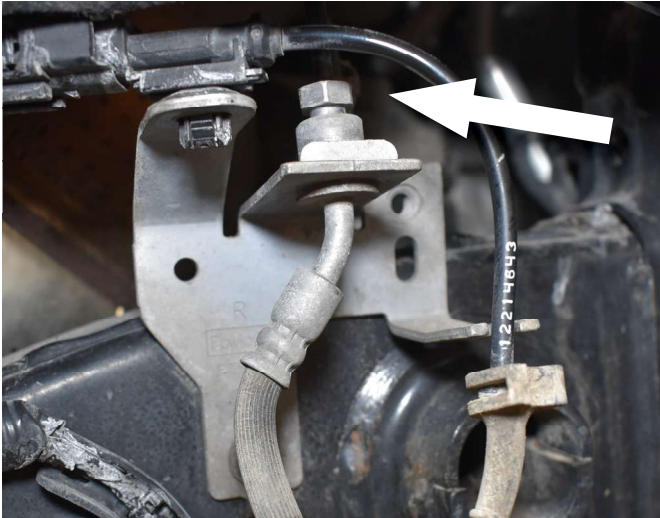
**FIGURE 47A**



**FIGURE 47B**

## BRAKE LINE INSTALLATION

54. Disconnect brake lines from the upper frame bracket **Fig. 48A** and remove the clip. **Fig. 48B**.



**FIGURE 48A**



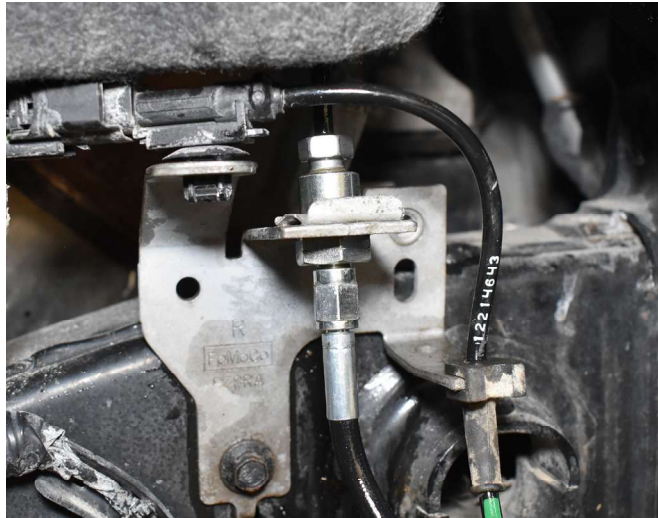
**FIGURE 48B**

55. Disconnect the brake line from the brake caliper by removing the banjo bolt. Retain the banjo bolt, discard the 2 crush washer as a new ones are provided. **Fig. 49**



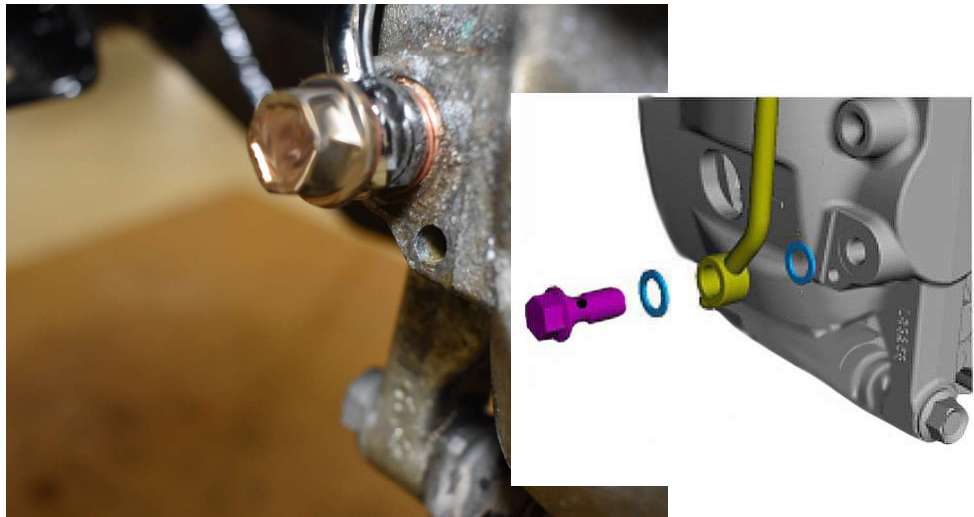
**FIGURE 49**

56. Re-attach provided brake line through the frame bracket and to the factory line. Re-secure with factory clip the **Fig. 50**



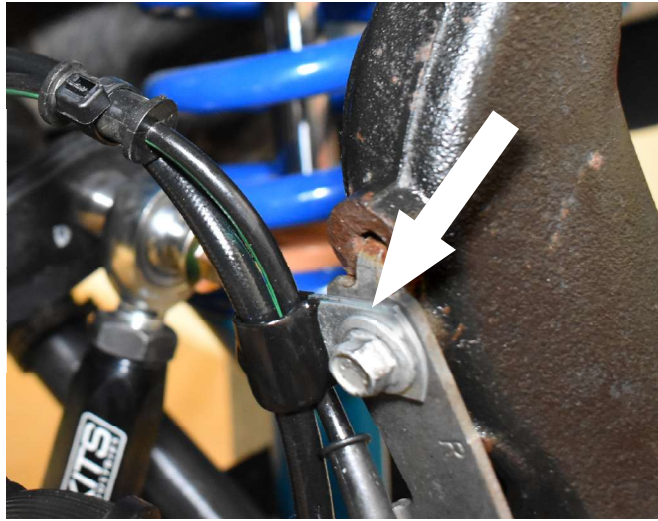
**FIGURE 50**

57. Attach the other end of the brake line to the brake caliper using the provided banjo bolt and the 2 provided crush washers. **Fig. 51**



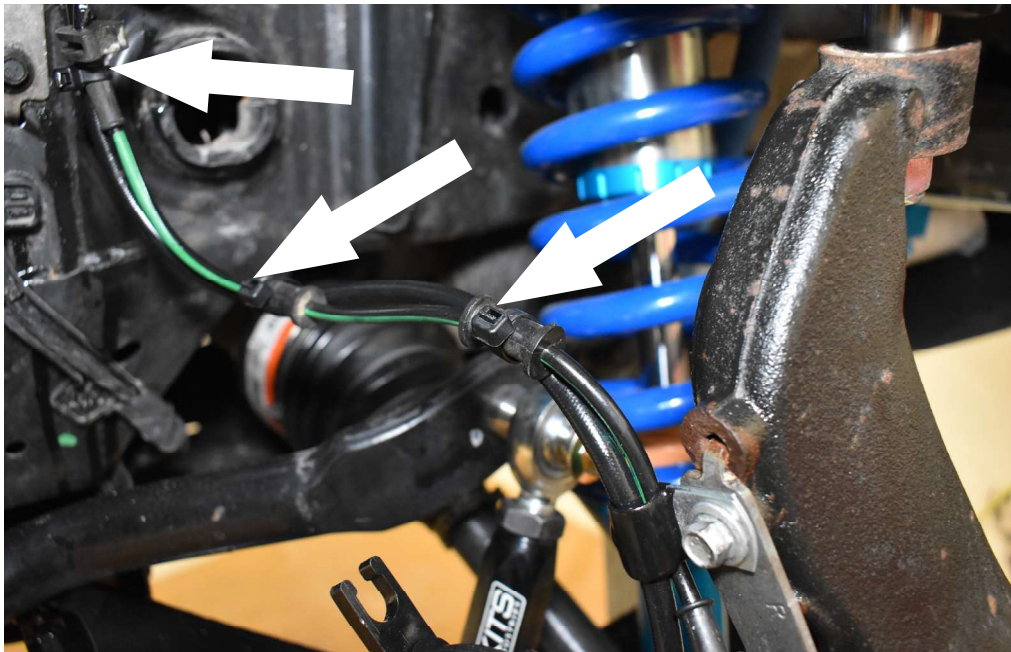
**FIGURE 51**

58. Attach new brake line to the OE knuckle bracket using the provided loop bracket. **Fig. 52**



**FIGURE 52**

59. Attach the ABS line and the brake line together using the provided zip ties. **Fig. 53**



**FIGURE 53**

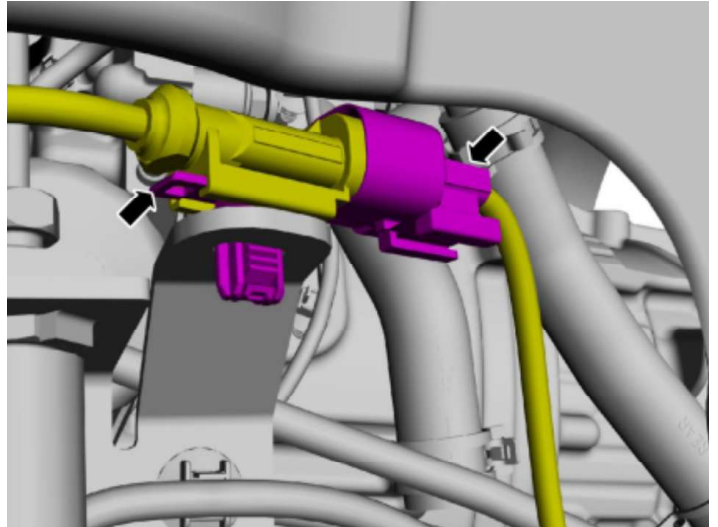
## BJK3321001/2 - Bronco Pre-Runner Kit

60. Brakes will need to be bled per manufacturers recommended procedure.

61. Re-Install the ABS sensor into the knuckle or plug ABS line back in. **Fig. 54A, 54B**



**FIGURE 54A**



**FIGURE 54B**

62. Replace wheels and tires and lower vehicle to the ground.

63. Torque lug nuts to OE specifications.

64. The vehicle will need a complete front end alignment.

### **POST-INSTALLATION**

65. Check all hardware for proper torque.

66. Reconnect the positive and negative battery cables if removed.

67. The vehicle will need a complete front end alignment.

68. Check all hardware after 500 miles.